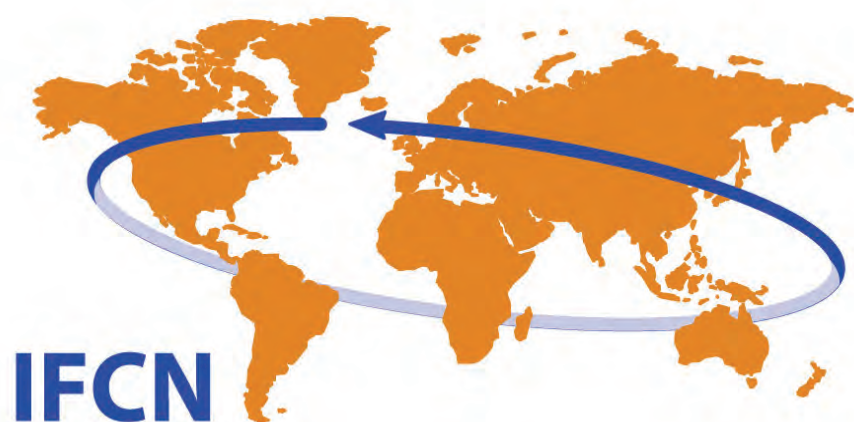


DATA SERVICES AND PRODUCTS LIST 2020



IFCN

Dairy Data · Knowledge · Inspiration



The Dairy Research Network

For a better understanding of milk production world-wide.

IFCN Vision, Mission & Values

2

The IFCN is a leading, global service and knowledge organisation in milk production, milk prices and related dairy economic topics. Its economic models and standards ensure comparability between countries and provide a global picture with regional insights.

P - IFCN Supporter Partnership Packages

3 -6

IFCN Supporter Partnership: Annual fee, Dairy Report, Supporter Conference, Newsletter, Logo etc.

D - IFCN Dairy Data

7 - 14

Dairy Sector

- D3.2 - IFCN Annual Dairy Sector Data - with IFCN Long-term Dairy Outlook
- D3.4.0 - IFCN Monthly Real Time Data
- D3.4.1 - IFCN Monthly Real Time Farm Economics
- D3.7 - IFCN Annual Farm Structure Data
- D3.8 - IFCN Top Milk Processor Data
- D3.9 - IFCN Monthly Dairy Trade Data - **NEW**

Farm Comparison

- D5.1 - IFCN Farm Economic Data

K - IFCN Knowledge

15 - 20

Reports

- K1.2 - IFCN Dairy Report - hard copy
- K1.3 - IFCN Dairy Report, PDF version

IFCN Presentations and Workshops

- K4.1 - IFCN Presentation
- K4.2 - IFCN Company Workshop
- K4.3 - IFCN Data Analysis Workshop
- K4.4 - IFCN Milk Production Outlook Webinar

I - IFCN Inspiration

21 - 26

Networking and Conferences

- I1.6 - IFCN Supporter Conference
- I1.7 - IFCN Regional Workshop
- I1.8 - IFCN Workshops

Hosting and Sponsorship of IFCN Events

- I2.5 - IFCN Hosting and Sponsor Package for IFCN Events

Research and Consulting Projects

- I3.1 - IFCN Research and Consulting

Terms and Conditions and Price list

27 - 28

The IFCN is a leading, global service and knowledge organisation in milk production, milk prices and related dairy economic topics. Its economic models and standards ensure comparability between countries and provide a global picture with regional insights. Recognizing the complex nature and fast pace of change in the dairy world nowadays, IFCN is guided by the mission to:



“Create a better understanding of the dairy world by providing comparable data, knowledge and inspiration.”

CORE COMPETENCE

The IFCN’s core competence lies in the network of dairy researchers, companies and stakeholders of the dairy chain who have built trust over the last 20 years, to openly share and discuss dairy economic topics. This and the annual working process make the IFCN an on-going knowledge creation system.

CORE VALUES

Trust and confidence are the keys for an operating network and sharing information. The IFCN is **independent** of third parties and is a politically neutral knowledge provider. **Truth and transparency** mean for the IFCN, that we describe realities and provide advice without hidden agendas. The IFCN and all its partners commit themselves not to get involved in any discussions or activities that may infringe any applicable competition law.

PARTNERSHIP PACKAGES



The Dairy Research Network

For a better understanding of milk production world-wide.

P IFCN Supporter Partnership Packages

Today the dairy world serves over 7 billion consumers and provides livelihoods for approximately **1 billion people** living on dairy farms. The key challenges for the dairy stakeholders lie in its **complexity and the high rate of change** in a globalized world. More than **120 dairy related companies** cooperate with IFCN a **global dairy related research** network that helps to better understand the dairy world by providing globally comparable dairy economic data and even forecasts since 2000.

PARTNERSHIP BENEFITS

- Global holistic picture of the dairy world
- Networking with your peers & companies
- Learning and capacity building

DATA BENEFITS

- World class dairy business intelligence
- Better decisions based on better analysis
- Better data: comparable, global & real time

IFCN Partnership Packages	Basic	Premium	Ultimate
Your benefit			
IFCN Dairy Report <small>Coverage of 120+ countries on macro and micro dairy economic indicators (5 hard & pdf copies)</small>	✓	✓	✓
IFCN Insight Slides <small>Annual holistic picture of the dairy world</small>	✓	✓	✓
IFCN Monthly Newsletter <small>Latest happening on the sector on your finger tips</small>	✓	✓	✓
Logo positioning <small>Be visible on the IFCN Dairy Report, IFCN World Dairy Map and on the IFCN Website</small>	✓	✓	✓
IFCN Hotline <small>Remarks and first suggestions for urgent questions</small>	Email	Email, Phone	Email, Phone
Global Dairy Think Tank <small>Be part of annual IFCN Supporter Conference with more than 120 agribusiness companies</small>	One seat	Two seats	Three seats
Annual 101 <small>Exclusive IFCN Partner company feedback meeting on existing data usage and future needs</small>		✓	✓
IFCN Milk Production Outlook Webinar <small>Join quarterly webinar on latest milk supply trends & drivers</small>		✓	✓
IFCN Workshops <small>Be part of the workshop - more information to be shared, envisaged locations are in Germany, USA & India</small>		✓	✓
Global Dairy Sector Database <small>Get data from county pages in IFCN Dairy Report (key variables)</small>	✓	✓	✓
Access to IFCN Data Products <small>Access to the standard IFCN Data Delivery Package (Excel format)*</small>	Data Purchase possible	Data Purchase possible	✓ Access to all data services

*More information about the Standard IFCN Data Delivery Package is provided on page 5.

IFCN Data Services and Products List 2020 (individual price)

P IFCN PARTNERSHIP PACKAGE		Basic	Premium	Ultimate
P5	IFCN Supporter Partnership Annual fee, Dairy Report, Supporter Conference, Newsletter, Logo etc.	6,000	10,000+	30,000
D IFCN DAIRY DATA				
D3 Dairy Sector				
D3.2	IFCN Annual Dairy Sector Data - with IFC Long-term Dairy Outlook	16,000	16,000	Free
D3.4.0	IFCN Monthly Real Time Data - on production, prices and milk feed price ratio	8,000	8,000	Free
D3.4.1	IFCN Monthly Real Time Farm Economics - available extension to D3.4.0	2,000	2,000	Free
D3.7	IFCN Annual Farm Structure Data - with time series and forecast **	12,000	12,000	Free
D3.8	IFCN Top Milk Processor Data	4,000	4,000	Free
D3.9	IFCN Monthly Dairy Trade Data - NEW	8,000	8,000	Free
D5 Farm Comparison				
D5.1	IFCN Farm Economic Data - time series	10,000	10,000	Free
K IFCN KNOWLEDGE				
K1 Reports				
K1.2	IFCN Dairy Report - hard copy ***	Free	Free	Free
K1.3	IFCN Dairy Report, PDF version	Free	Free	Free
K4 IFCN Presentations and Workshops				
D4.1	IFCN Presentation	On request	On request	On request
D4.2	IFCN Company Workshop	On request	On request	On request
D4.3	IFCN Data Analysis Workshop		Free	Free
D4.4	IFCN Milk Production Outlook Webinar		Free	Free
I IFCN INSPIRATION				
I1 Networking and Conferences				
I1.6	IFCN Supporter Conference, additional seat	1 seat	2 seats	3 seats
I1.7	IFCN Regional Workshop		Free	Free
I1.8	IFCN Workshops		Free	Free
I2 Hosting and Sponsorship of IFCN Events				
I2.5	IFCN Hosting and Sponsor Package for IFCN Events	6,000 - 30,000		
I3 Research and Consulting Projects				
I3.1	IFCN Research and Consulting - on specific topics	On request	On request	On request

Status: July 24th, 2019

You are purchasing annual using rights of IFCN Data Services and Products.

They are foreseen for partners of the IFCN Network to be confidentiality used internally within the company only.

* All prices are in Euro excluding VAT or other taxes if applicable.

** Product can be bought as an extension to the IFCN Annual Dairy Sector Data D3.2 with a 75 % discount (price EUR 3,000)

*** Shipping of IFCN Dairy Reports requires additional shipping costs. Additional hard copy costs 200 EUR.

Let's start and grow together!



"It always seems impossible until it's done."



IFCN DAIRY DATA

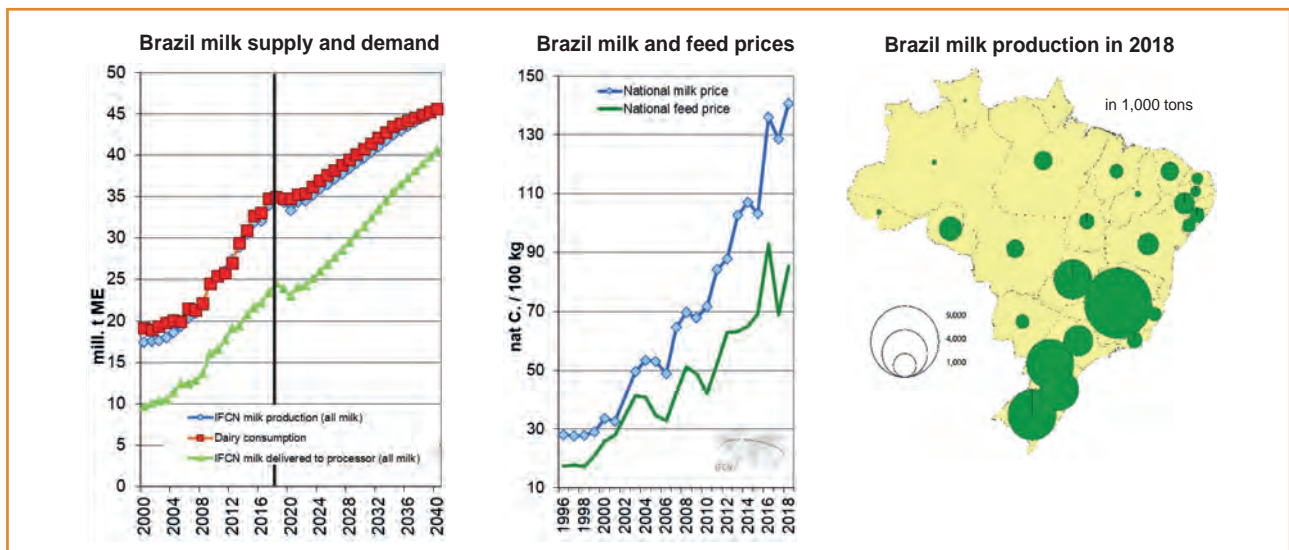


The Dairy Research Network

For a better understanding of milk production world-wide.

D3.2 IFCN Annual Dairy Sector Data - Dairy Outlook 2040

This comprehensive data product supports long-term strategic business decisions providing comparable country level data. It contains the parts: time line data since 1996, regional data and the IFCN Long-term Dairy Outlook until 2040. The Database reflects how the overall dairy situation looks like in the country of analysis, helping in assessing the real market potentials. Standardised and quality approved country and regional data increase efficiency in business analysis and business development by reducing the data mining time.



MAIN BENEFITS OF THE PRODUCT



- Get the **holistic picture** of the dairy sector
- Enhance efficiency in business analysis with **reliable and benchmarked data**
- Optimize your business scenario with annually **up-to-date Outlook Data**

TECHNICAL DETAILS

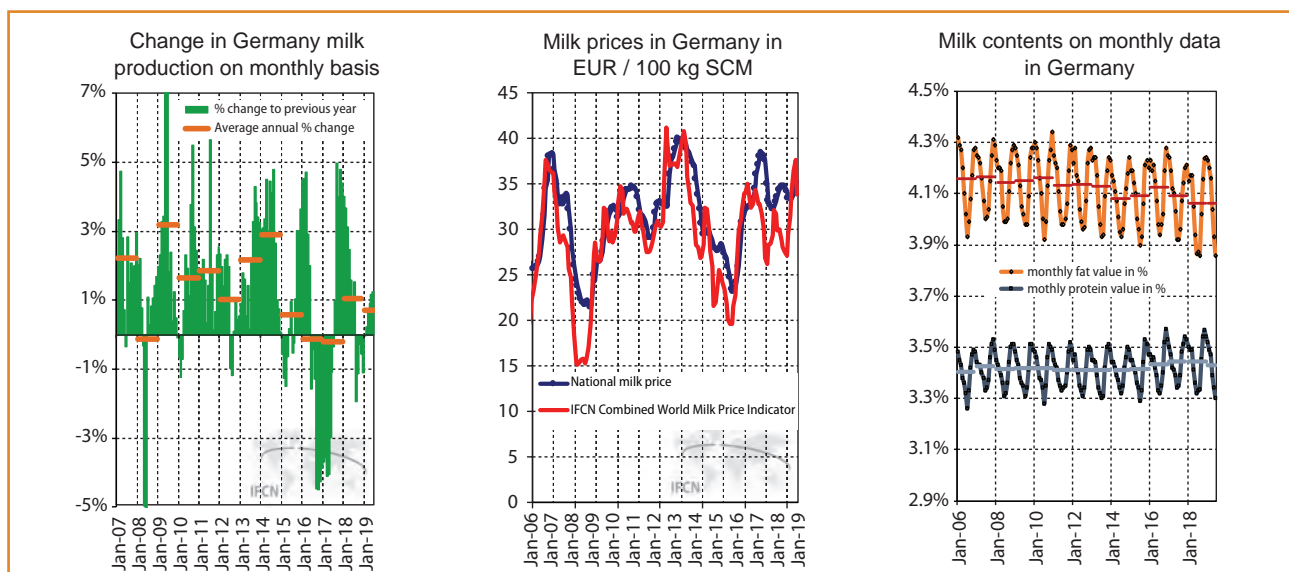
- **Format:** Excel & PDF files
- **Delivery:** Annual updated in March
- **Coverage:** +200 countries, 100 % of world milk supply
- **Data Period:** 1996 - current year and until 2040 forecast for core variables
- **Price:** 16,000 EUR/year

KEY VARIABLES

- Milk supply and demand outlook
- Dairy farm & cow numbers outlook
- Total dairy trade, amount & stocks
- Milk and feed prices
- Milk production by region

D3.4.0 IFCN Monthly Real Time Data

This real time product provides data on milk production, milk & feed prices and describes the current situation and on-going development on dairy markets to optimise short-term operational business processes on a global and on country level. A summary with the key changes and IFCN Market Analysis are sent with this data product. Data provide real-time situation of the dairy market with price analysis, assists to anticipate short-term shifts and changes in the dairy markets. Information on fat and protein production allows classifying the trend of delivered milk content in a country.



MAIN BENEFITS OF THE PRODUCT



- **Get real-time** measurements for better understanding dairy market changes & drivers
- **Have comparability** between your milk prices & other countries with different currencies
- Be agile for changes of dairy stocks in main export market

TECHNICAL DETAILS

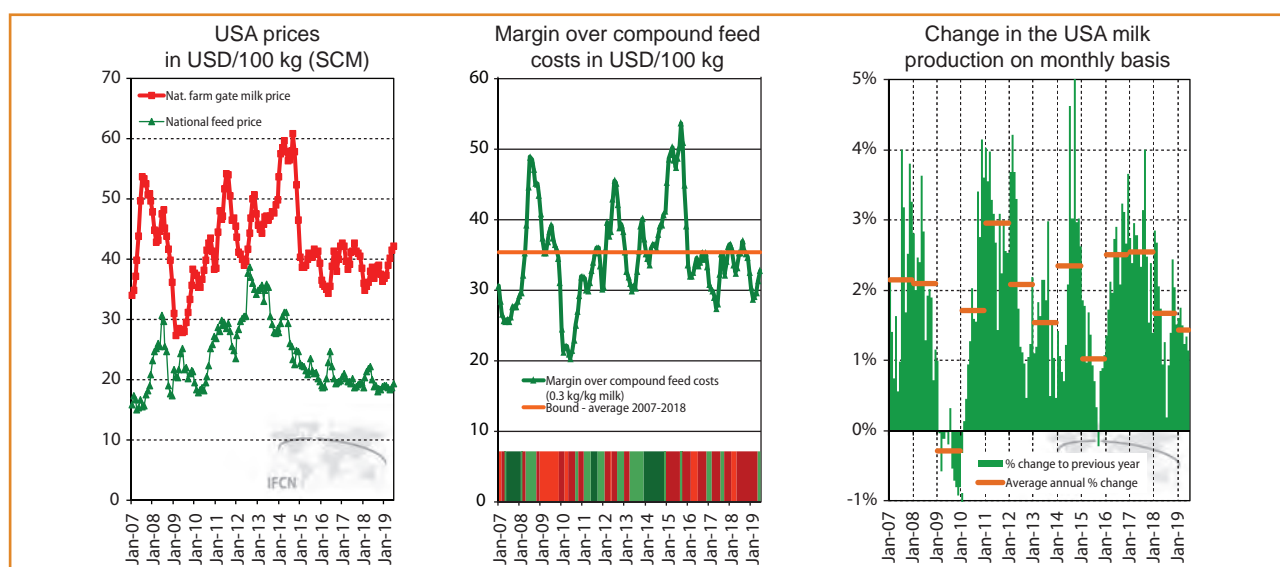
- **Format:** Excel & PDF files
- **Delivery:** Monthly
- **Coverage:** 64 countries 92 % of world milk supply
- **Data Period:** 2006 - current month
- **Price:** 8,000 EUR/year

KEY VARIABLES

- Monthly milk & feed prices
- Monthly milk production
- EU-28 & USA dairy stocks
- Fat and protein content of milk
- Market report and charts

D3.4.1 IFCN Monthly Real Time Farm Economics - extension file*

This real time product delivers farm economics data with easy to understand traffic light visualisation. Tested since the beginning of 2015, this product is available as an extension file, delivered together with the IFCN Monthly Real Time Data. Product covers farm economic situation from over 64 countries and 11 aggregates, makes it possible to compare different countries and how fast their farm economics react after the world market price has changed. This product is an easy overview to judge farm economic situations in various countries, as well as a helpful in decision making for high-level strategic planning.



MAIN BENEFITS OF THE PRODUCT



- Be agile with measuring the world **prices transmission** periods to national markets
- Be the right person in your team to judge the national farm economics
- Forecast your sales numbers based on **real-time farm economic** situation

TECHNICAL DETAILS

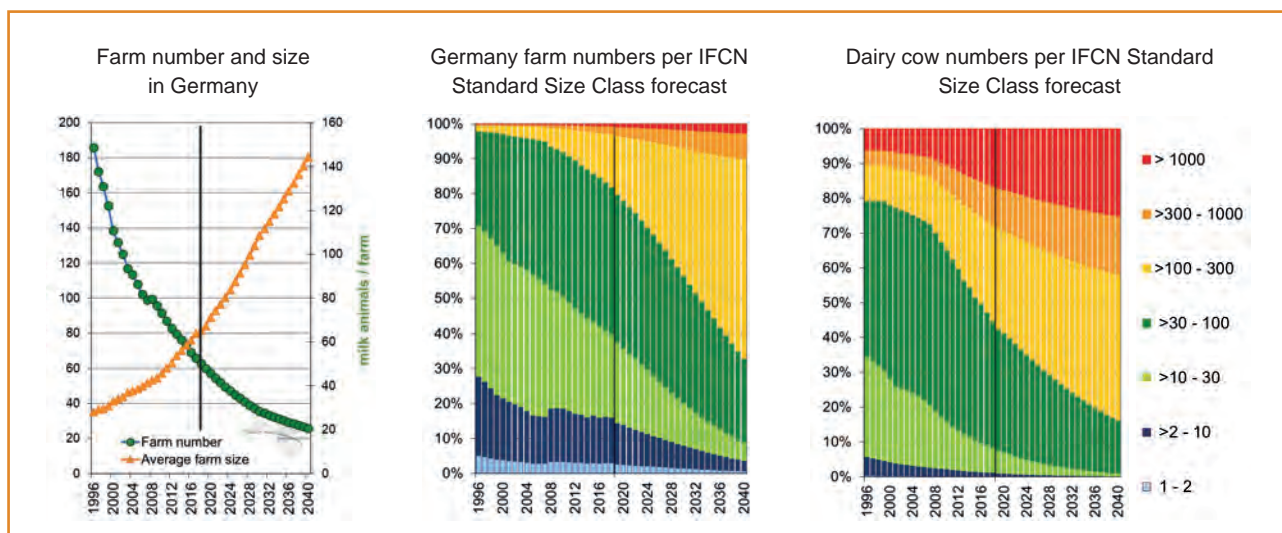
- **Format:** Excel & PDF files
- **Delivery:** Monthly
- **Coverage:** 62 countries 92 % of world milk supply
- **Data Period:** 2006 - the current month
- **Price:** 2,000 EUR/year (only as D3.4.0 extension)

KEY VARIABLES

- Monthly milk & feed prices
- Margin over composed feed costs
- Long term period of Bound
- Judgement of farm economics

D3.7 IFCN Annual Farm Structure Data

Farm structure data are important, when planning sales or expansions of strategies. The farm structure data offers a standardisation of farm size classes around the globe and therefore it provides the opportunity of analysing and benchmarking comparable herd size classes of dairy animals and farms. Time line data and forecast until 2040 provide a complete overview on historic and future of farm structure developments. This database comprehends the farm structure trends in over 90 countries, assists in categorising customers and the lucrative target markets.



MAIN BENEFITS OF THE PRODUCT



- Defining potentials for the market development plan with **farm structure forecast**
- Be **aware herd size** of your future customers
- Measure with right indicators the growing speed of your **customer segments**

TECHNICAL DETAILS

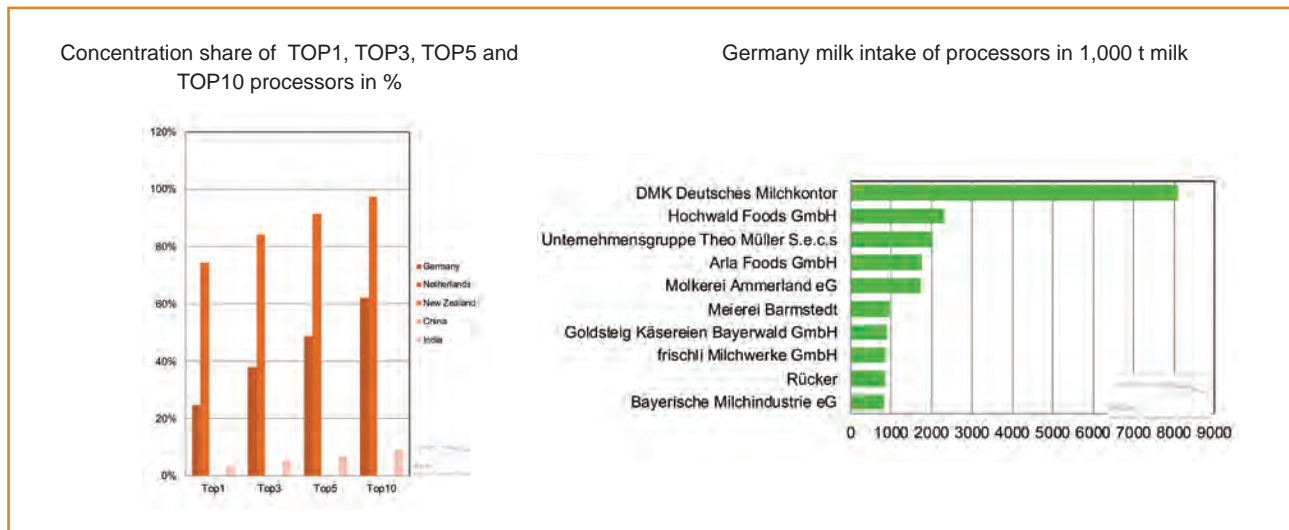
- **Format:** Excel & PDF files
- **Delivery:** Annually, delivery in April
- **Coverage:** 80 countries, 95 % of world milk supply
- **Data Period:** 1996 - 2040
- **Price:** 12,000 EUR/year (3,000 EUR as extension to D3.2)

KEY VARIABLES

- Farm numbers, Ø Farm size
- IFCN Standard herd size classes
- Farm structure forecast per class
- Cow numbers per herd size
- >100 herd size classes forecast

D3.8 IFCN Top Milk Processor Data

This IFCN Product highlights the top dairy processors in the major milk producing countries of the world. Ranked by milk intake and turnover, these data can serve as a substantial help for market analysis when planning product strategies. The product enables you to judge where dairy processing markets are growing and how consolidation in the milk processing industry is taking place.



MAIN BENEFITS OF THE PRODUCT



- Understand **scope of the milk intake** capacity of top processors for being competitive
- Scan potential competitors, or customers, **market share** for best positioning
- Design & scan your new market position with **top milk processors**

TECHNICAL DETAILS

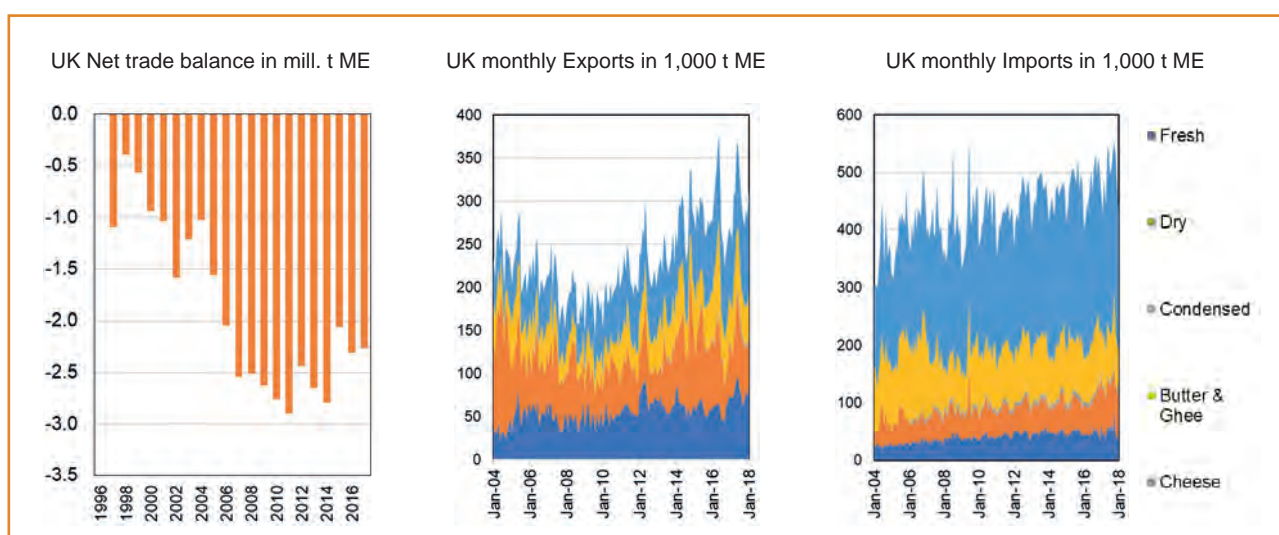
- **Format:** Excel files
- **Delivery:** Bi-annual in October
- **Coverage:** over 50 countries, 90 % of world milk supply
- **Data Period:** 2008 - last available data
- **Price:** 4,000 EUR/year

KEY VARIABLES

- Milk intake of top 10 processors
- Dairy turnover in USD
- Legal ownership status of top 10
- Development of top 10 processors
- Global top 20 processors list

D3.9 IFCN Monthly Dairy Trade Data

IFCN Partners can benefit from the latest available data consistency and comparability on monthly trade of dairy commodities, down to the level of 6-digit HS code, for over 90 of the top trading countries. The D3.9 product can serve as substantial help when planning the product trade strategies by highlighting the market trends and how international dairy demand and trade are taking shape. The monthly volume and value of export and import per dairy commodities enables users to assess the milk self-sufficiency situation per country. Monthly dairy trade data product has an exceptional value having comparable units.



MAIN BENEFITS OF THE PRODUCT



- Get a regular measuring tool for **observing changes** in traded commodities monthly
- Get an overview on the potential **trade growth** areas
- Be in the right **position in the top net** importer and exporters countries markets

TECHNICAL DETAILS

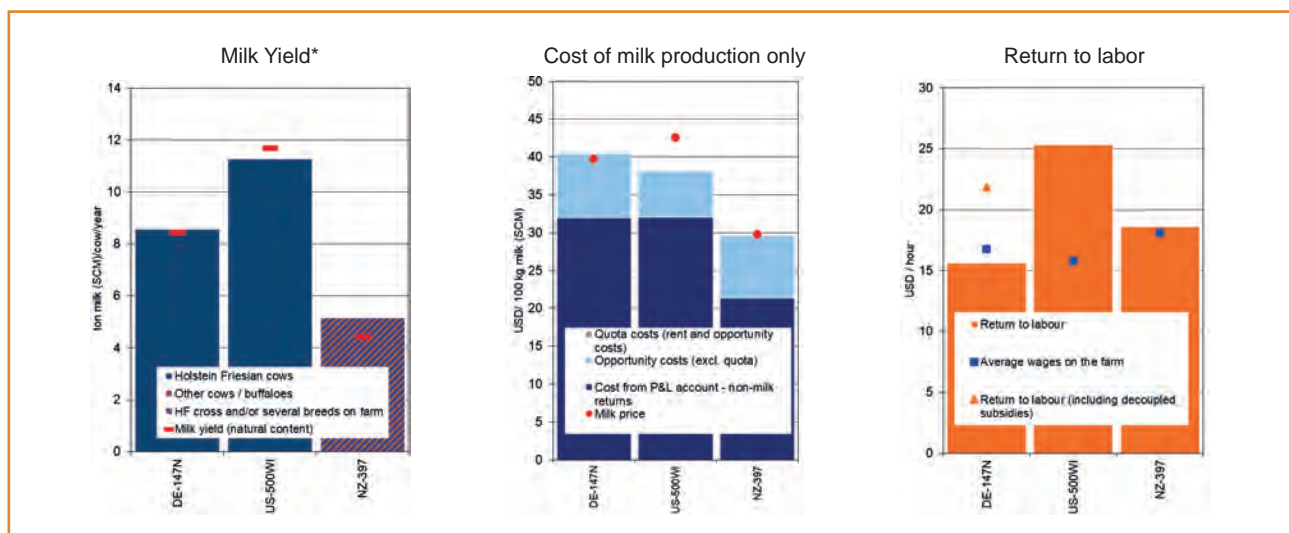
- **Format:** Excel files
- **Delivery:** Quarterly
- **Coverage:** over 90 countries, 95 % of world milk supply
- **Data Period:** 2002 - latest available data
- **Price:** 8,000 EUR/year

KEY VARIABLES

- Traded dairy volume and value
- 5 dairy commodity groups
- Milk self-sufficiency indicator
- Monthly dairy trade surplus
- 6 digits HS code dairy products

D5.1 IFCN Farm Economic Data

This comprehensive product facilitates strategic decision making by presenting a unique tool for benchmarking dairy farms world-wide. There are new key figures embedded in the product; cost components of the dairy enterprise and actual farm economics. These figures help to get even better insight in to actual farm economics in the analysed countries. With the data, gain a deeper understanding of cost competitiveness and KPIs of dairy production. Furthermore, key indicators to show sustainability of dairy farms world-wide are covered.



MAIN BENEFITS OF THE PRODUCT



- Expand the growth of your company via benchmarking **cost and income of farms**
- **Assess sustainability** and resilience of dairy farms in specific countries
- Better pricing strategy in profitable locations with measuring the **value of the product**

TECHNICAL DETAILS

- **Format:** Excel files
- **Delivery:** Annually, delivery in October
- **Coverage:** over 54 countries, 176 typicals, 89 % of world milk supply
- **Data Period:** 2000 - last complete calendar year
- **Price:** 10,000 EUR/year

KEY VARIABLES

- Base farm data: size, yield, system
- Typical farm economic results
- Costs components of typical farm
- Sustainability & resilience in typical farm

*Typical farm codes:
DE - Germany, US - The United States of America, NZ - New Zealand | example: DE-147N = German 147-cow farm in Northern Germany.

REPORTS, PRESENTATIONS, WORKSHOPS



The Dairy Research Network

For a better understanding of milk production world-wide.

K1.2 IFCN Dairy Report - hard copy

K1.3 IFCN Dairy Report - PDF

The IFCN Dairy Report has been published annually since 2000 and has become a standard publication for researchers and companies involved in the dairy chain. It enables to gain a holistic view and understand interrelations in the dairy sector on a global level. By this, it presents a solid fact base for discussions and strategy development in the dairy supply chain.



MAIN BENEFITS OF THE PRODUCT



- Leverage global dairy farm and **market knowledge** provided in the Report
- Better market strategy setting based on numbers with **historical time series**
- Define competitive advantage of your business in specific region with **typical farm**

TECHNICAL DETAILS

- **Format:** Hard copy, PDF
- **Delivery:** Annually, delivery in October
- **Coverage:** 120 countries
- **Data Period:** 1996 - previous year
- **Price:** 200 EUR / additional hard copy
- **PDF copy:** 3,000 EUR / year for non-partners - Free for all IFCN Supporter Partners

KEY VARIABLES

- Milk supply & demand, prices
- Milk delivery, processing & trade
- Farm economics & structure
- Typical dairy farms comparison
- Special studies on dairy economics

K4.1 IFCN Presentation

IFCN can be an appreciated speaker during conferences, meetings and summits. IFCN gives actual insight in the dairy development, can add the little extra with interesting presentations of key figures of the dairy and farm sector.

TECHNICAL DETAILS

- **Format:** Presentation with PDF hand-out
- **Delivery:** On demand, in-house or at IFCN
- **Duration:** 0.5 - 2 hours
- **Price:** On request



K4.2 IFCN Company Workshop

In a company specific workshop, topics, duration and set-up are developed together with the company. These workshops work as excellent source of latest market updates and motivation for the team.

TECHNICAL DETAILS

- **Format:** Presentation with PDF hand-out
- **Delivery:** On demand, in-house or at IFCN
- **Duration:** 3 - 8 hours
- **Content:** Tailor made based on specific request: outcome is highly confidential
- **Sample:** - **Briefing general management** on global dairy for strategic decisions
 - **Capacity building** of marketing/sales team
 - Supporting for **defining Business intelligence** set up & next steps
 - „**Business war gaming**“
- **Price:** On request



K4.3 IFCN Data Analysis Workshops

The IFCN Data Analysis Workshop is a perfect introduction for inexperienced colleagues to the world of dairy economics. In this workshop IFCN explains the basics of key numbers in the dairy business, the standard profit calculation and introduces into strategic planning. A good mix of experienced and young dairy economists joins the workshop, to get insight into what key numbers are critical for their business, how to draw conclusion and how to build strategies for the company.



MAIN BENEFITS OF THE PRODUCT



- Improve **team capacity** on dairy economics understanding
- Deepening your market/product analysis with **IFCN Methods**
- Development your dairy knowledge via better **leveraging IFCN Analysis**

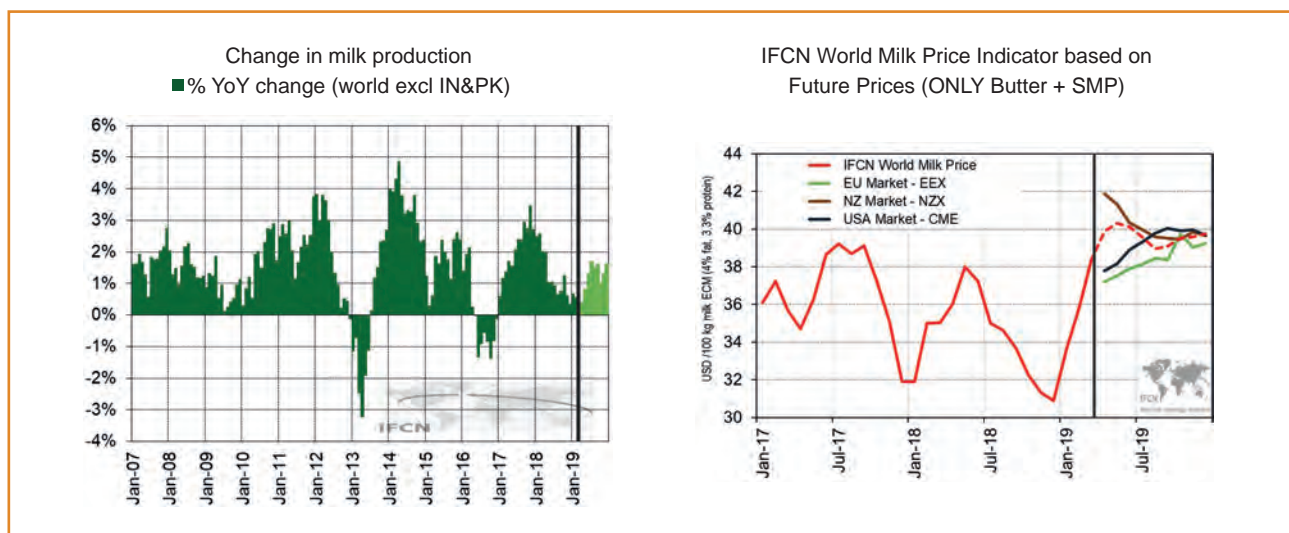
TECHNICAL DETAILS

- **Format:** Lecture, PDF material and IFCN Dairy Report
- **Delivery:** On demand, in-house or at IFCN
- **Content:** IFCN methodology & indicators
- **Duration:** 0.5 day
- **Price:** Free for Premium & Ultimate IFCN Partners



K4.4 IFCN Milk Production Outlook Webinar

The Webinar is one of the innovative service providing milk supply projections to the next 12 months for all IFCN Partners. It offers robust milk supply outlook model results and explanations including world milk price possible developments based on Futures (CME, EEX, NZX). This service permits IFCN Partners overview the current dairy market situation and tracking the underlying factors throughout the milk prices and production over 60 countries. Forecasted milk production on stable prices and judgements on the world milk price next months' trends refreshes the understanding on the dairy market trajectories.



MAIN BENEFITS OF THE PRODUCT



- Monitor upcoming **dairy market drivers** for growth of your sales numbers
- Improve your risk management through measuring **milk prices trends**
- Better prepared in profitable locations with **measuring rate of milk supply growth**

TECHNICAL DETAILS

- **Format:** PDF & audio recorded file
- **Delivery:** Quarterly
- **Coverage:** 62 countries, 92 % of world milk supply
- **Duration:** 30 - 45 minutes
- **Price:** Free for Premium & Ultimate IFCN Partners

KEY VARIABLES

- World milk production forecast
- World milk and feed price forecast
- Next 12 months drivers of supply
- Farm economics status & forecast
- Maps & charts with key info

Let's start and work together!



"Your success, because we love what we do!"



NETWORKING AND CONFERENCES



The Dairy Research Network

For a better understanding of milk production world-wide.

11.6 IFCN Supporter Conference

This international dairy conference obtains its exceptional character by bringing together representatives from a variety of companies from different stages of the whole dairy supply chain.



MAIN BENEFITS OF THE PRODUCT



- Interacting & networking with other **dairy industry peers**
- **Learning & exchanging** ideas on actual new industry topics with experts
- **Grow your expertise** via using the expertly compiled resources

TECHNICAL DETAILS

- **Format:** Event seat with handbook
- **Delivery:** Annually, every September
- **Content:** Tailor made topic with Host
- **Duration:** 2,5 days
- **Price:** Free for all IFCN Partners
- **Additional seat:** 2,500 EUR (excl. travel & accommodation costs)

KEY MESSAGES

- Milk supply & demand drivers
- World milk and feed price forecast
- Long & short-term dairy outlook
- Special topic related presentations
- Discussions & voting on the topic questions

11.7 IFCN Regional Workshop

This workshop stands out owing to its regional set up, providing a synergetic platform for national and international researchers, policymakers and companies, to discuss and develop deeper understanding of the dairy development in the region and local dairy chain.



MAIN BENEFITS OF THE PRODUCT



- Interacting & networking with other dairy industry peers
- Learning & exchanging ideas on burning new industry topics with experts
- Be strong in Indian market with meeting right people.

TECHNICAL DETAILS

- **Format:** Event seat with handbook
- **Delivery:** Annually
- **Content:** Tailor made topic with Host
- **Duration:** 1 - 2 days
- **Price:** By invitation only

KEY MESSAGES

- Milk supply & demand drivers
- World milk and feed price forecast
- Long & short-term dairy outlook
- Special topic related presentations
- Discussions & voting on the topic questions

11.8 IFCN Workshops

These workshops make possible to bring various partner companies' core knowledge into one platform and share it among each other. Network and exchange ideas with industry members on the specific Workshop topic.



MAIN BENEFITS OF THE PRODUCT



- Interacting & networking with other dairy industry peers
- Learning & exchanging ideas on burning new industry topics with experts
- Grow your expertise via using the expertly compiled resources

TECHNICAL DETAILS

- **Format:** Event seat
- **Delivery:** Annually
- **Content:** Tailor made topic with Host
- **Duration:** to be defined
- **Price:** By invitation only

KEY MESSAGES

- Milk supply & demand drivers
- World milk and feed price forecast
- Long & short-term dairy outlook
- Special topic related presentations
- Discussions & voting on the topic questions

12.5 IFCN Hosting and Sponsor Package for IFCN Events

Today the dairy world provides livelihoods for 1 billion people living on dairy farms. To be a host or sponsor is a great opportunity to gain visibility among the international leading dairy research network, either by melting in into the researcher network, or by being close to decision makers of international and national dairy business companies.



MAIN BENEFITS OF THE PRODUCT



- Take leadership on the innovative topics among your industry partners
- Promote your brand on the stage of market leaders, competitors & researchers
- Be the news maker with your expert position of dairy relevant topics

TECHNICAL DETAILS

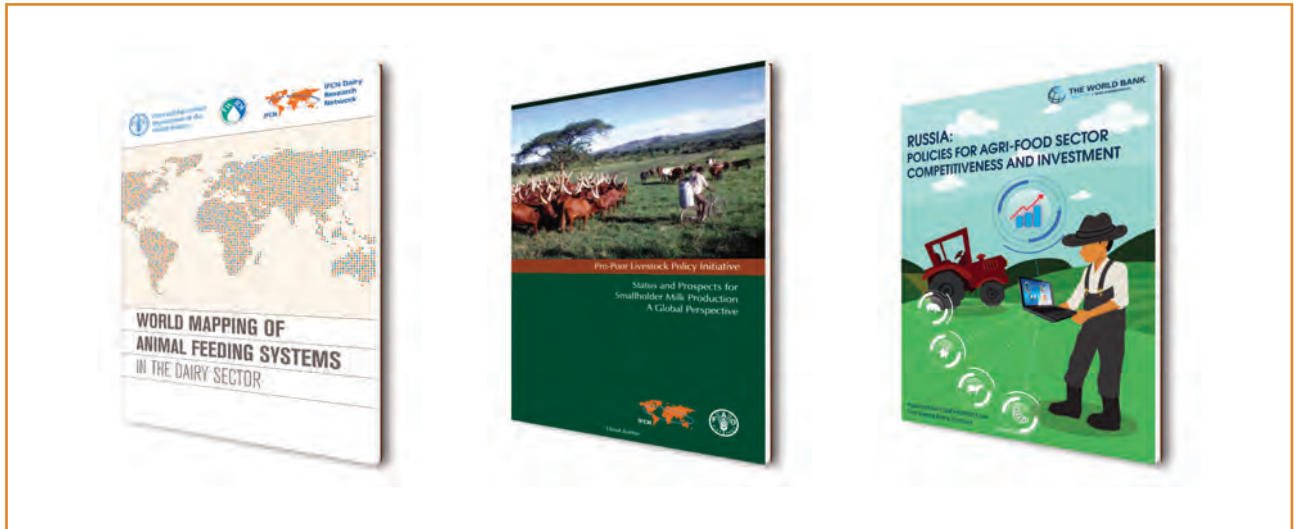
- **Format:** Event seats, logo
- **Delivery:** Annually, each event
- **Content:** Topic related presentation
- **Materials:** Event handbook, banner
- **Price:** 6,000 EUR - Bronze Sponsor
10,000 EUR - Silver Sponsor
20,000 EUR - Gold Sponsor
30,000 EUR - Host

KEY MESSAGES

- Topic related presentation
- Recognition as host / sponsor
- Logo positioning on banners
- Additional 2 seats for hosts
- Participation at the think tank talks

13.1 IFCN Research and Consulting

This tailor-made consultancy and research ranges from a presentation to full day-workshop and from short-term to long-term research projects. It offers the outstanding opportunity to strengthen capacity building in dairy knowledge and support in strategic planning. A specific research project can save internal sources by cooperation with IFCN and by using the knowledge and network in the research work.



MAIN BENEFITS OF THE PRODUCT



- Right choose for future milk sourcing opportunities in your future markets
- Get right future farming model to serve / sell your products
- Measure & improve your solutions value towards dairy farms

TECHNICAL DETAILS

- **Format:** Written reports, PPT or xls.
- **Delivery:** As defined in the project
- **Content:** Upon consultation
- **Duartion:** Upon consultation
- **Price:** On request

CONFIDENTIALITY

The content of bilateral discussion is highly confidential and will never become accessible to third parties.

IFCN reserves the right to use precompetitive information under the condition that the source remains unknown.

Terms and conditions

USING RIGHTS

All information provided during conferences and materials provided by IFCN are for internal use within the cooperating company or companies owned 100% by the cooperating company only. To avoid misuse, the cooperating company is not permitted to use the deliverables outside the company or to forward these deliverables to third parties. With the end of the partnership the using rights will automatically end.

The distribution of the deliverables and the grant of **annual user rights** are exclusively performed by the IFCN. The cooperating company agrees not to use or disclose the information/material provided by IFCN for any purpose other than the **internal use**.

DISCLAIMER

Neither the IFCN AG nor other legal entities in the IFCN AG accept any liability whatsoever for any direct or consequential loss howsoever arising from any of the IFCN Material or its contents or otherwise arising in connection herewith.

COPYRIGHT

Copyright © 2019 by IFCN AG. All rights reserved.

No IFCN Data may be reproduced in any form or by any electronic or mechanical means including information storage and retrieval systems without a written permission given by the IFCN AG.

IFCN Data Services and Products List 2020 (individual price)

P IFCN PARTNERSHIP PACKAGE		Basic	Premium	Ultimate
P5	IFCN Supporter Partnership Annual fee, Dairy Report, Supporter Conference, Newsletter, Logo etc.	6,000	10,000+	30,000
D IFCN DAIRY DATA				
D3 Dairy Sector				
D3.2	IFCN Annual Dairy Sector Data - with IFC Long-term Dairy Outlook	16,000	16,000	Free
D3.4.0	IFCN Monthly Real Time Data - on production, prices and milk feed price ratio	8,000	8,000	Free
D3.4.1	IFCN Monthly Real Time Farm Economics - available extension to D3.4.0	2,000	2,000	Free
D3.7	IFCN Annual Farm Structure Data - with time series and forecast **	12,000	12,000	Free
D3.8	IFCN Top Milk Processor Data	4,000	4,000	Free
D3.9	IFCN Monthly Dairy Trade Data - NEW	8,000	8,000	Free
D5 Farm Comparison				
D5.1	IFCN Farm Economic Data - time series	10,000	10,000	Free
K IFCN KNOWLEDGE				
K1 Reports				
K1.2	IFCN Dairy Report - hard copy ***	Free	Free	Free
K1.3	IFCN Dairy Report, PDF version	Free	Free	Free
K4 IFCN Presentations and Workshops				
D4.1	IFCN Presentation	On request	On request	On request
D4.2	IFCN Company Workshop	On request	On request	On request
D4.3	IFCN Data Analysis Workshop		Free	Free
D4.4	IFCN Milk Production Outlook Webinar		Free	Free
I IFCN INSPIRATION				
I1 Networking and Conferences				
I1.6	IFCN Supporter Conference, additional seat	1 seat	2 seats	3 seats
I1.7	IFCN Regional Workshop		Free	Free
I1.8	IFCN Workshops		Free	Free
I2 Hosting and Sponsorship of IFCN Events				
I2.5	IFCN Hosting and Sponsor Package for IFCN Events	6,000 - 30,000		
I3 Research and Consulting Projects				
I3.1	IFCN Research and Consulting - on specific topics	On request	On request	On request

Status: July 24th, 2019

You are purchasing annual using rights of IFCN Data Services and Products.

They are foreseen for partners of the IFCN Network to be confidentiality used internally within the company only.

* All prices are in Euro excluding VAT or other taxes if applicable.

** Product can be bought as an extension to the IFCN Annual Dairy Sector Data D3.2 with a 75 % discount (price EUR 3,000)

*** Shipping of IFCN Dairy Reports requires additional shipping costs. Additional hard copy costs 200 EUR.

IFCN SUPPORTER PARTNERS

Milk processing



Milking and barn equipment



Health and hygiene



Feed



Farm machinery



Genetics for animal & plants



Other branches of the dairy chain



CONTACT DETAILS

IFCN Dairy Research Network
 Schauenburgerstr. 116
 24118 Kiel, Germany
 info@ifcndairy.org
 www.ifcndairy.org

Management/Supervisory Board
 Torsten Hemme
 Torsten.Hemme@ifcndairy.org
 Tel.: +49 431 5606 251
 Fax: +49 431 5606 262